

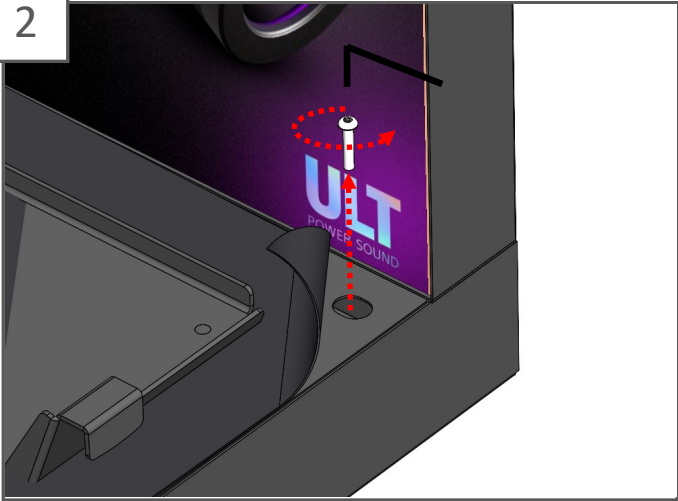
Sony — ULT Field 7 Speaker Installation

1



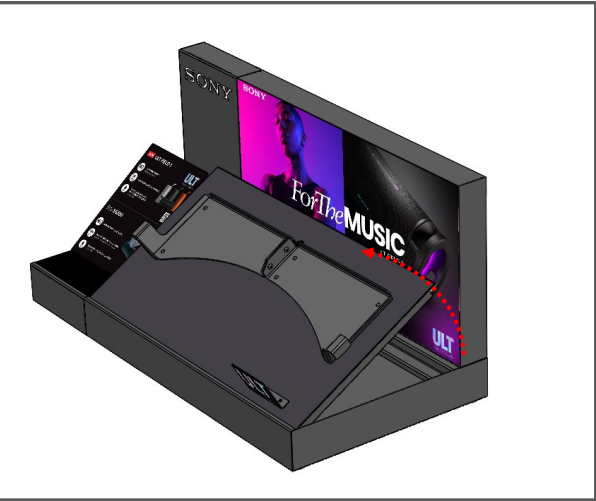
Peel back the back corners of the magnetic graphic to reveal the screws underneath.

2



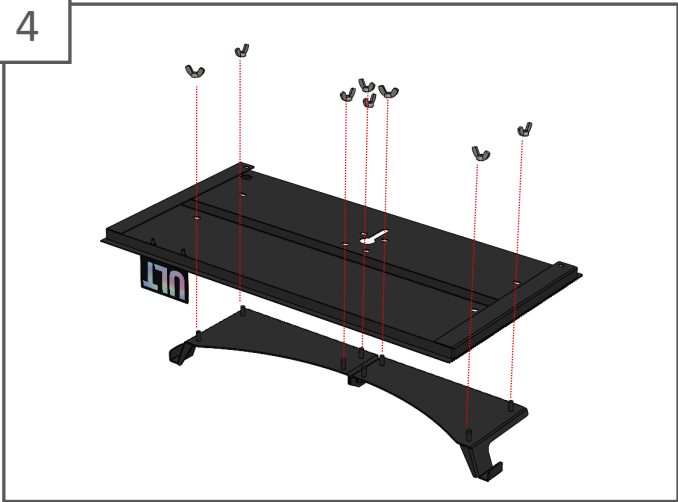
Remove the two screws.

3



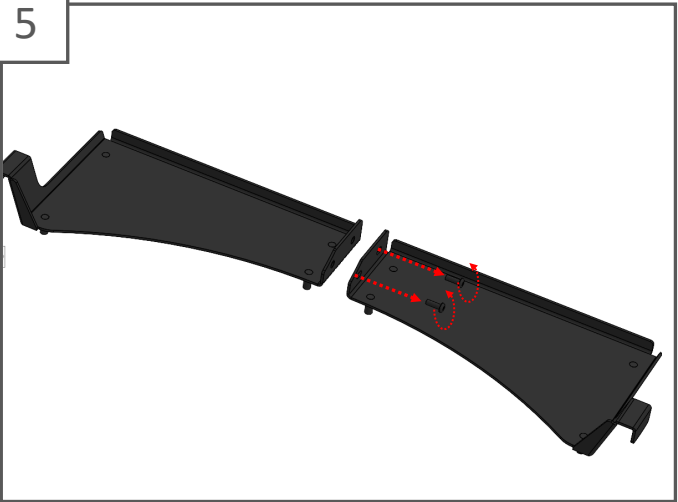
Lift out the top plate

4



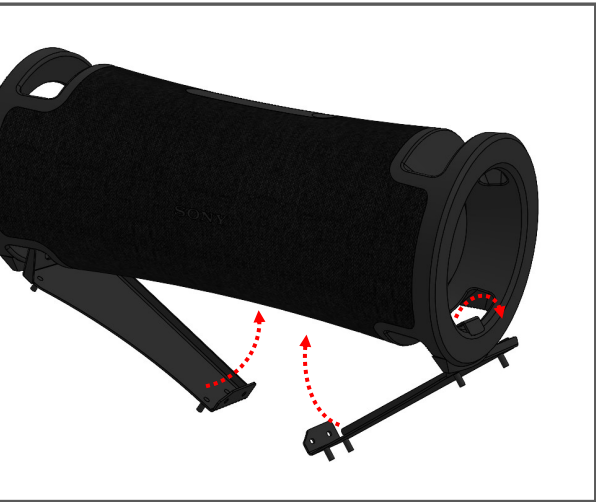
Turn over the plate and remove the 8 wing nuts securing the bracket.

5



Undo the two fixings to separate the bracket.

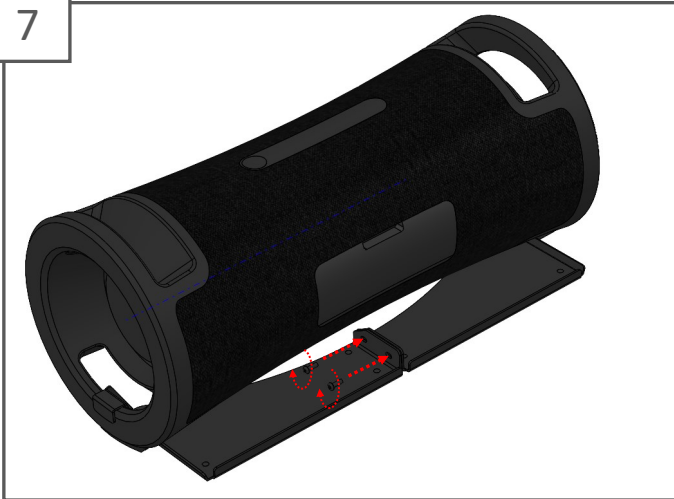
6



Fit the brackets onto the Field 7 by placing the hooks over the ends of the speaker.

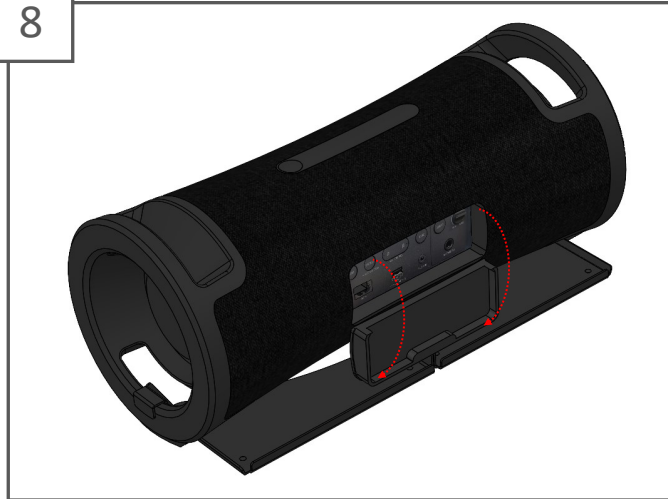
Sony — ULT Field 7 Speaker Installation

7



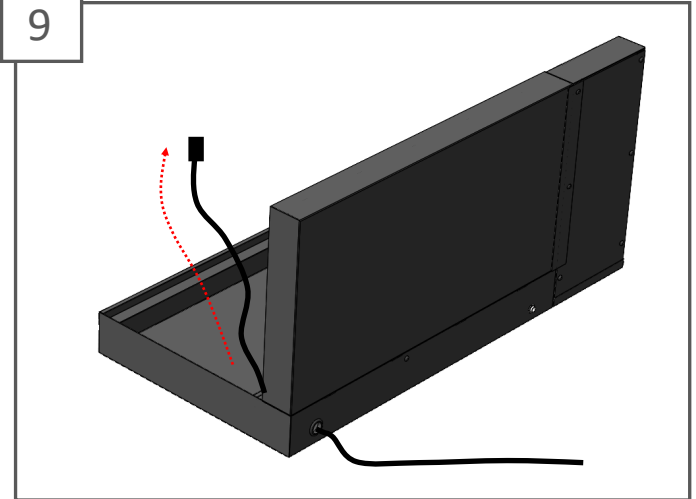
Replace the two screws to fix the two halves of the bracket together.

8



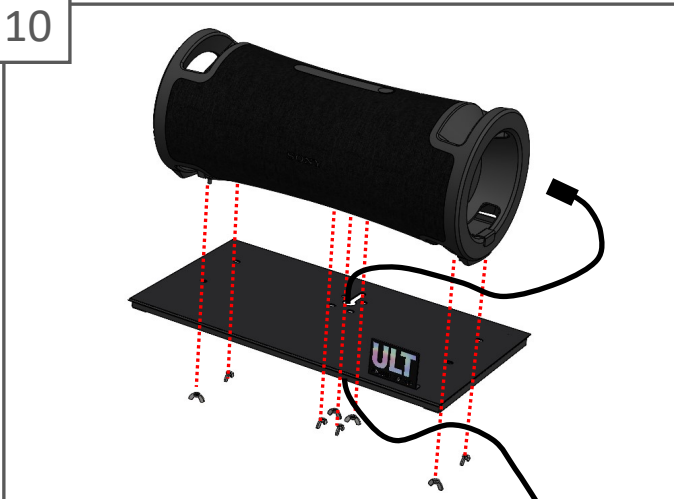
Open the flap on the back of the speaker.

9



Thread the Field 7 power cable through the hole in the rear of the unit.

10



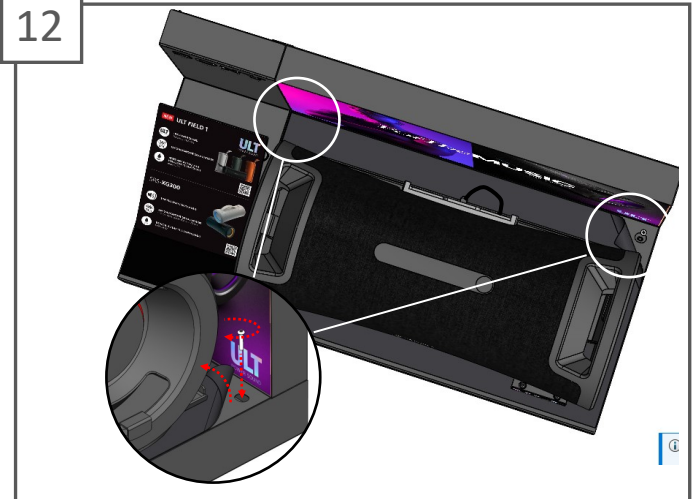
Pass the power cable through the base plate and secure the speaker and bracket to the plate using the wing nuts removed earlier.

11



Plug the power cable into the rear of the speaker then fit the speaker bracket and plate to the unit.

12



Secure the plate to the unit by replacing the two screws removed earlier.

Sony — ULT Field 7 Speaker Installation

13



Plug in the two power cables from the unit (1x LED power and 1x speaker power).